

SUITE 5750 E
5,000 SF

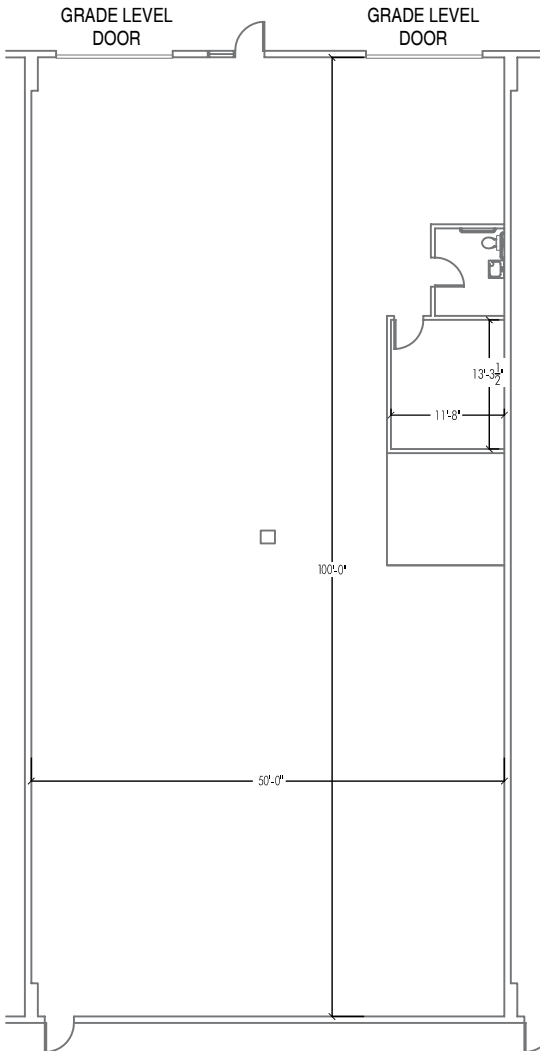


REALTY CORPORATION
303-329-8100

PARK INDUSTRIAL CENTER
5750 EAST 58TH AVE.
COMMERCE CITY, CO 80022

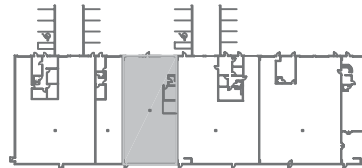


Ideal Warehouse Distribution Location



PROPERTY DESCRIPTION

Unit	5750E
Total Size	5,000 SF
Office	~ 200 SF
Clear Height	18'
Loading	Two 12'x14' grade level doors
Power	100 Amps, 480/277 Volts, 3 phase
Available	Immediately
Rate	\$9.00 NNN
Other	Located in Adams County Enterprise Zone



SUITE 5750 E

5,000 SF



PROPERTY DETAILS: PARK INDUSTRIAL CENTER

Address: 5700 - 6125 E. 56th Ave.
5800 - 6360 E. 58th Ave.

of Buildings: 13

Total Building Area: 465,950 SF

City: Commerce City

County: Adams

Year Built: 1983 - 2017

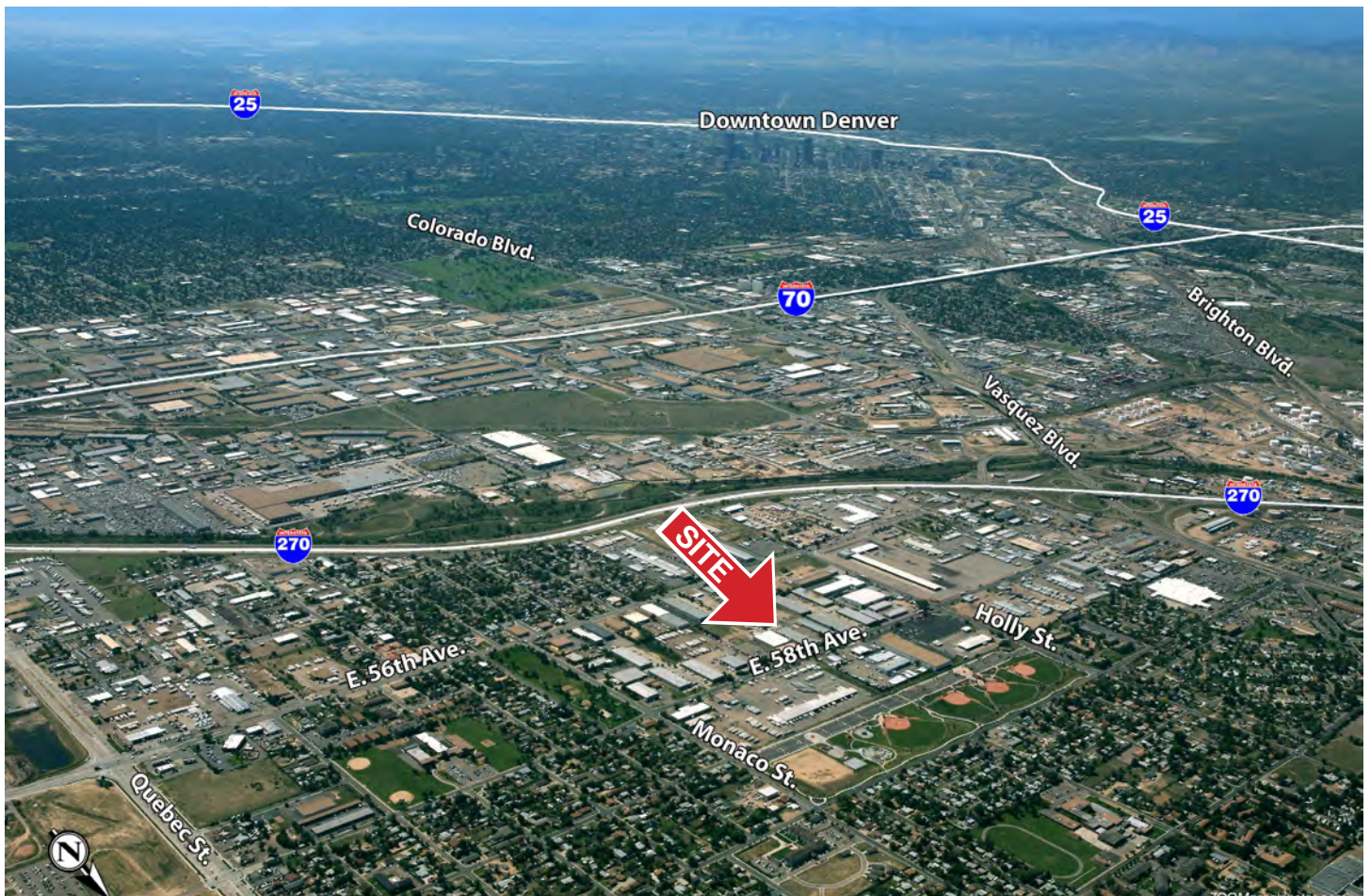
Construction: Concrete block and tilt-up, metal roofs

Owner: Kew Realty Corporation

Location: Easy access to I-270, I-70 with I-225, I-76



LOCATION



All information contained in this brochure, while not guaranteed, is obtained from sources deemed reliable. No representation is made as to the accuracy thereof and is submitted subject to errors, omissions, change of price, withdrawal or other conditions, without notice. It is the responsibility of either you or your agent to verify its accuracy.

Leasing Contacts | 303-329-8100

Mike Ledger | mledger@kewrealty.com

Jeremy Spira | jspira@kewrealty.com

Katherine Buckley | kbuckley@kewrealty.com



REALTY CORPORATION