

SUITE 6300 I  
 10,000 SF

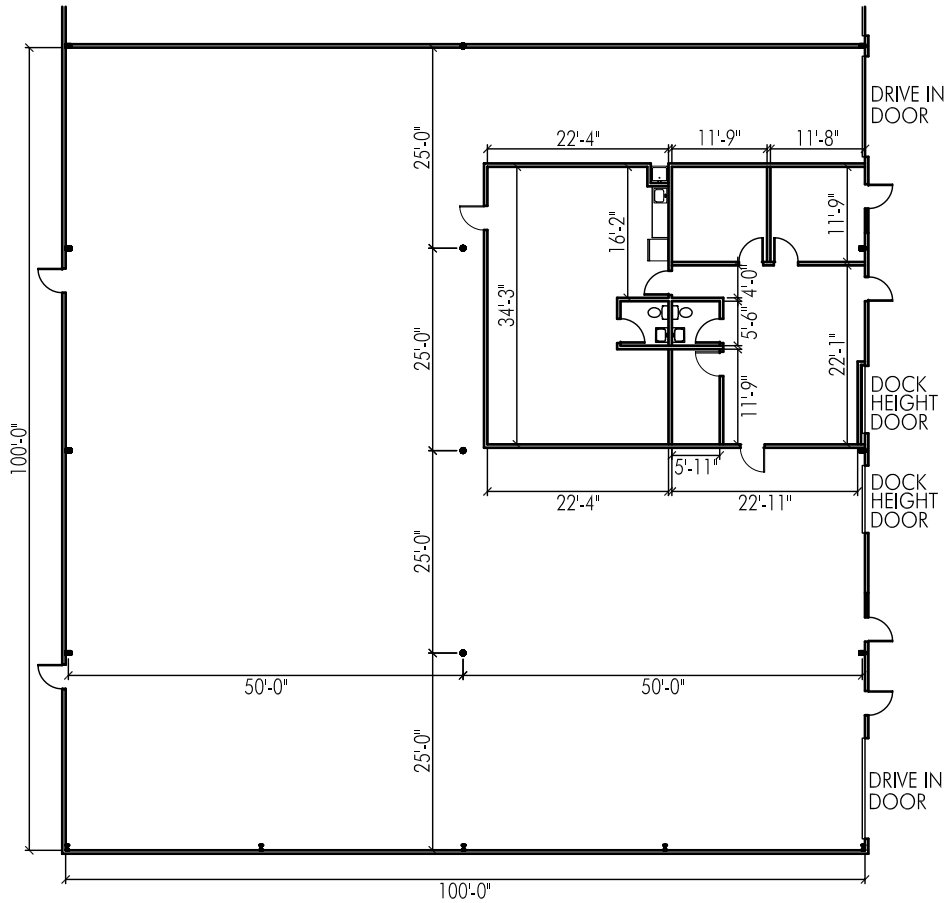


REALTY CORPORATION  
 303-329-8100

PARK INDUSTRIAL CENTER  
 6300 EAST 58TH AVE.  
 COMMERCE CITY, CO 80022

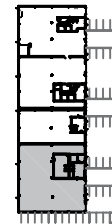


# Ideal Warehouse Distribution Location



## PROPERTY DESCRIPTION

Unit	6300I
Total Size	10,000 SF
Office	Approx. 1,500 SF
Clear Height	18'
Loading	Two 12'x14' drive-in doors Two 9'x10' dock-high doors
Power	200 Amps, 480/277 Volts, 3 phase
Rate	\$8.00 NNN
Available	Immediately
Other	Located in Adams County Enterprise Zone



SUITE 6300 I  
10,000 SF



## PROPERTY DETAILS: PARK INDUSTRIAL CENTER

Address: 5700 - 6125 E. 56th Ave.  
5800 - 6360 E. 58th Ave.

# of Buildings: 13

Total Building Area: 465,950 SF

City: Commerce City

County: Adams

Year Built: 1983 - 2017

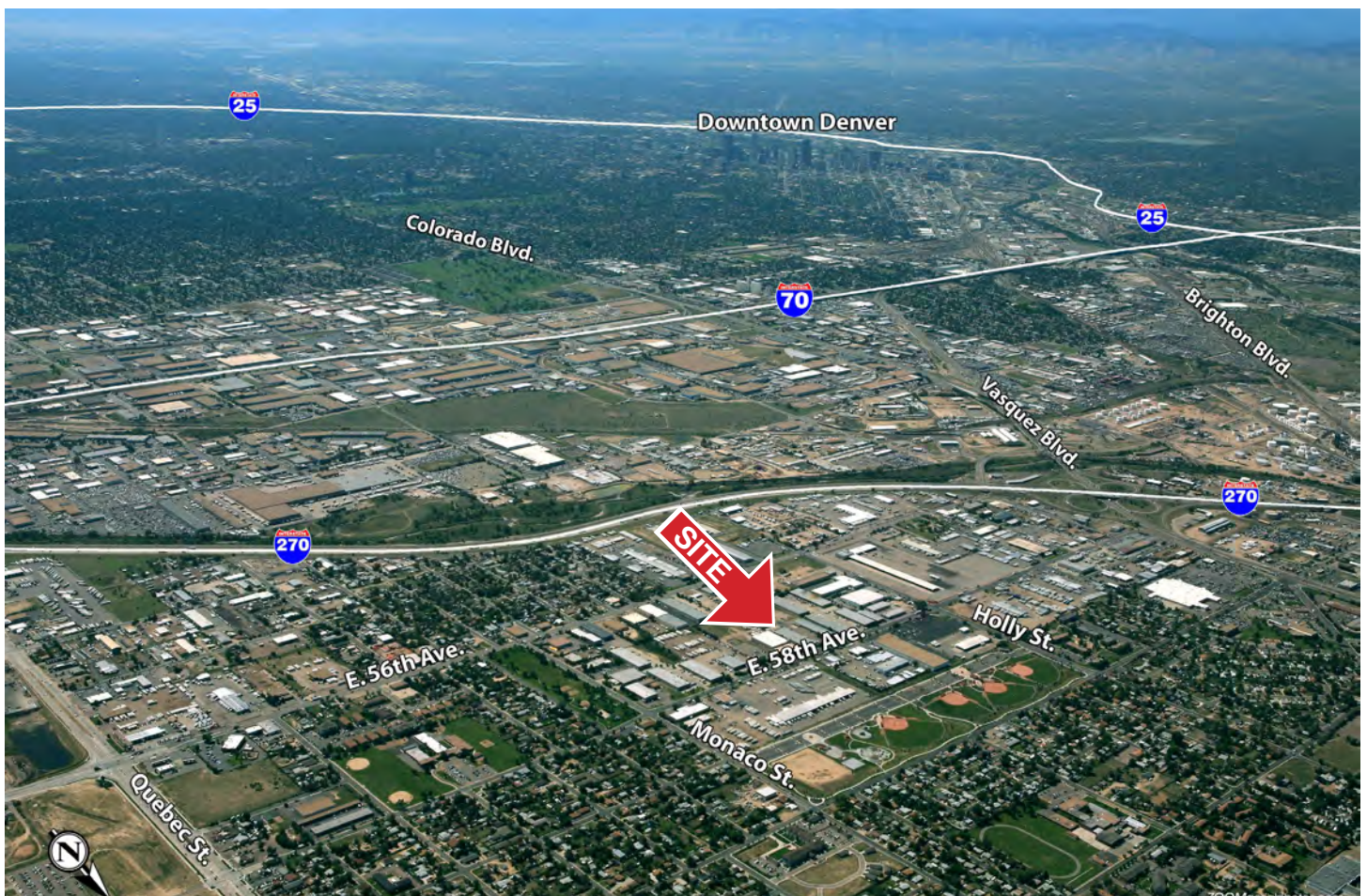
Construction: Concrete block and tilt-up, metal roofs

Owner: Kew Realty Corporation

Location: Easy access to I-270, I-70 with I-225, I-76



## LOCATION



All information contained in this brochure, while not guaranteed, is obtained from sources deemed reliable. No representation is made as to the accuracy thereof and is submitted subject to errors, omissions, change of price, withdrawal or other conditions, without notice. It is the responsibility of either you or your agent to verify its accuracy.

### Leasing Contacts | 303-329-8100

Mike Ledger | [mledger@kewrealty.com](mailto:mledger@kewrealty.com)

Jeremy Spira | [jspira@kewrealty.com](mailto:jspira@kewrealty.com)

Katherine Buckley | [kbuckley@kewrealty.com](mailto:kbuckley@kewrealty.com)



REALTY CORPORATION