

SUITE 6100F
 10,000 SF

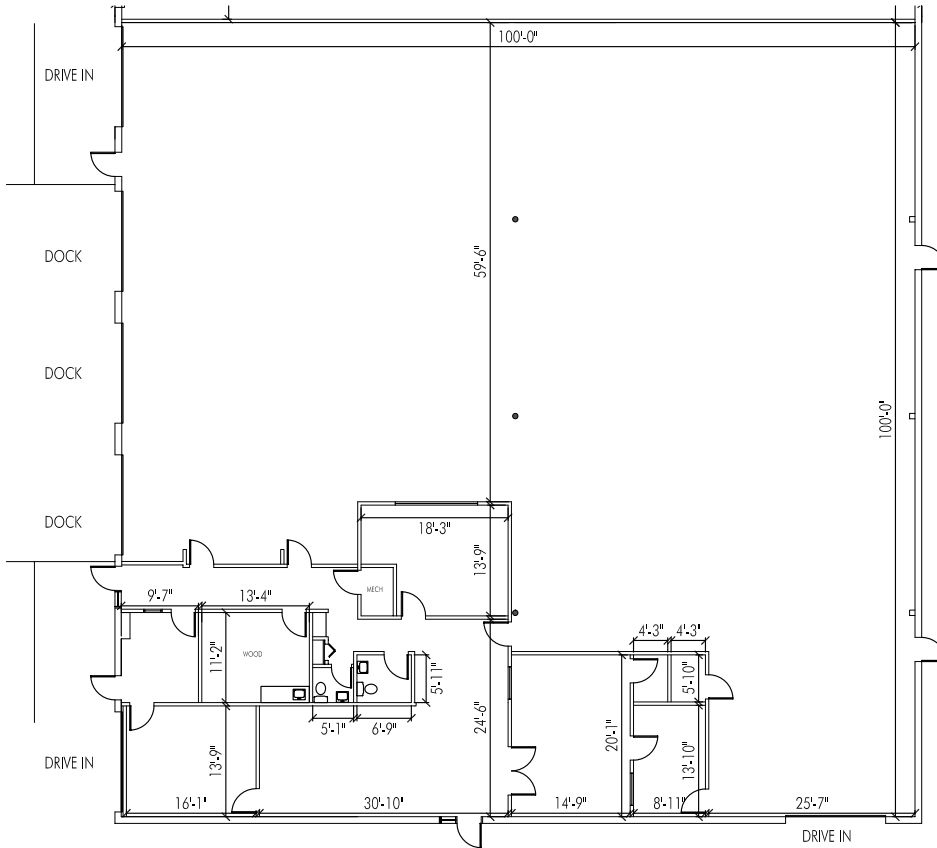


REALTY CORPORATION
 303-329-8100

PARK INDUSTRIAL CENTER
 6100 EAST 58TH AVE.
 COMMERCE CITY, CO 80022

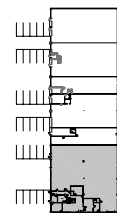


Ideal Warehouse Distribution Location

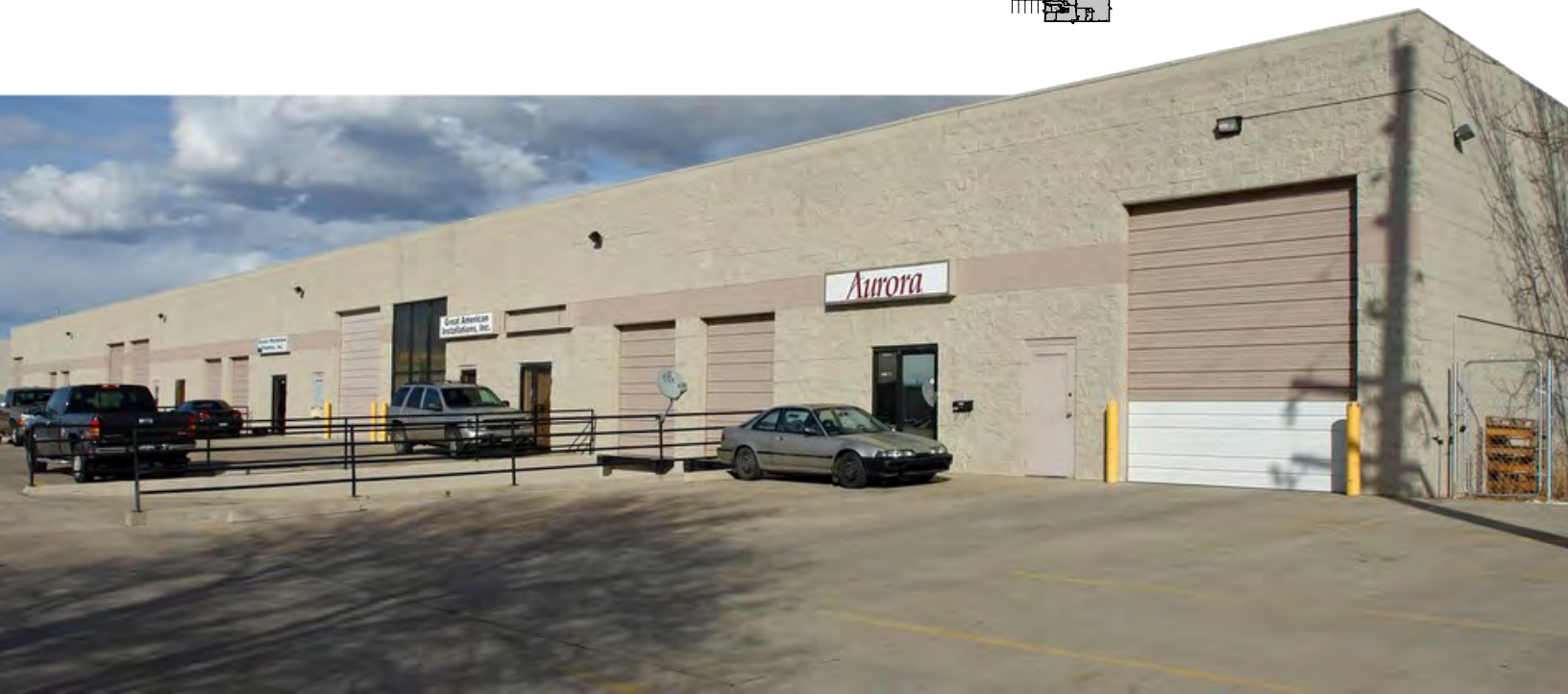


PROPERTY DESCRIPTION

Unit	6100F
Total Size	10,000 SF
Office	2,100 SF
Clear Height	18'
Loading	(3) 10'x9' Dock High (3) 12'x14' Grade Level
Power	600 Amps, 480/277 Volts, 3 phase
Available	3/1/2019
Rate	\$8.00 NNN
Other	Located in Adams County Enterprise Zone



SUITE 6100F
10,000 SF

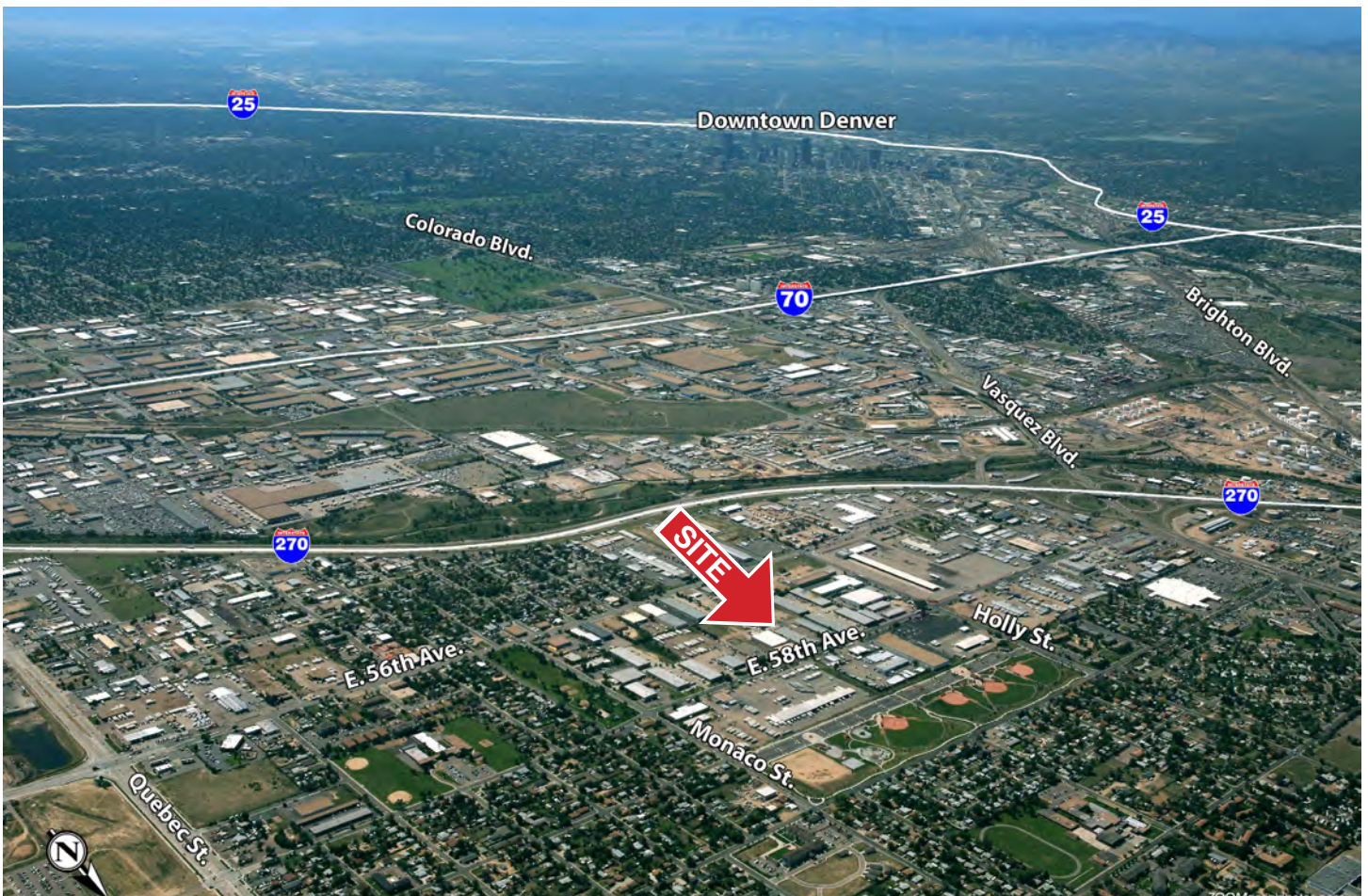


PROPERTY DETAILS: PARK INDUSTRIAL CENTER

Address: 5700 - 6125 E. 56th Ave.
5800 - 6360 E. 58th Ave.
of Buildings: 13
Total Building Area: 465,950 SF
City: Commerce City
County: Adams
Year Built: 1983 - 2007
Construction: Concrete block and tilt-up, metal roofs
Owner: Kew Realty Corporation
Location: Easy access to I-270, I-70 with I-225, I-76



LOCATION



All information contained in this brochure, while not guaranteed, is obtained from sources deemed reliable. No representation is made as to the accuracy thereof and is submitted subject to errors, omissions, change of price, withdrawal or other conditions, without notice. It is the responsibility of either you or your agent to verify its accuracy.

Leasing Contacts | 303-329-8100

Mike Ledger | mledger@kewrealty.com

Jeremy Spira | jspira@kewrealty.com

Katherine Buckley | kbuckley@kewrealty.com



REALTY CORPORATION