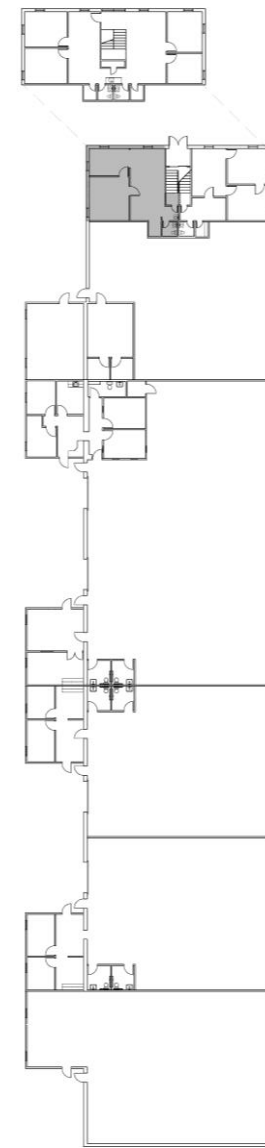


UNIT 21  
800 SF



REALTY CORPORATION  
303-329-8100

KEW EAST INDUSTRIAL PARK  
3200 W. 71ST AVE.  
WESTMINSTER, CO 80030



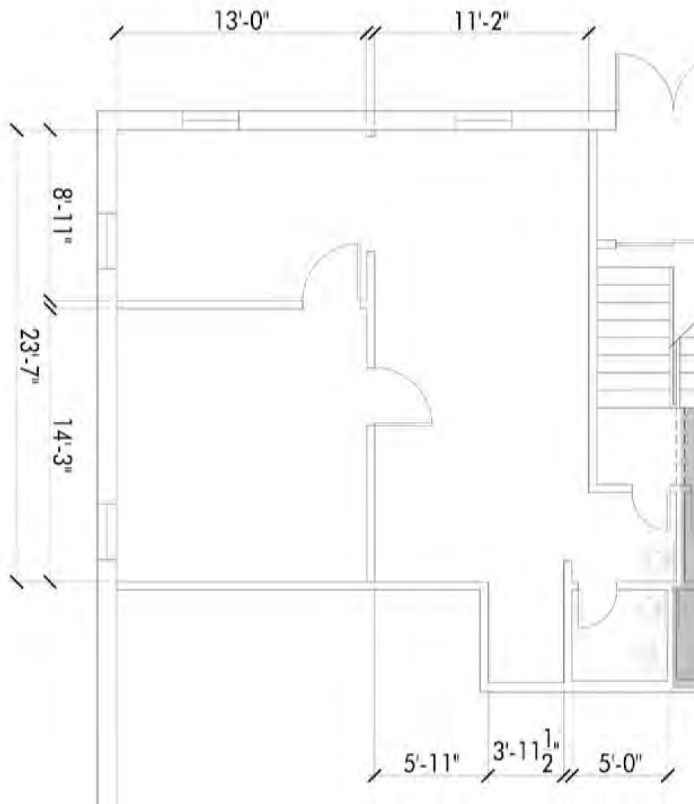


## KEW Industrial Park

3200 W. 71<sup>st</sup> Ave., Westminster, CO 80030

# Office Suite for Lease

Unit 21 | 800 SF | \$700/month + utilities | Available 4/1/2019



### PROPERTY DESCRIPTION

- Off street parking
- Located near RTD B-Line Light Rail Westminster Station.
- Located within Adams County Enterprise Zone



UNIT 21  
800 SF

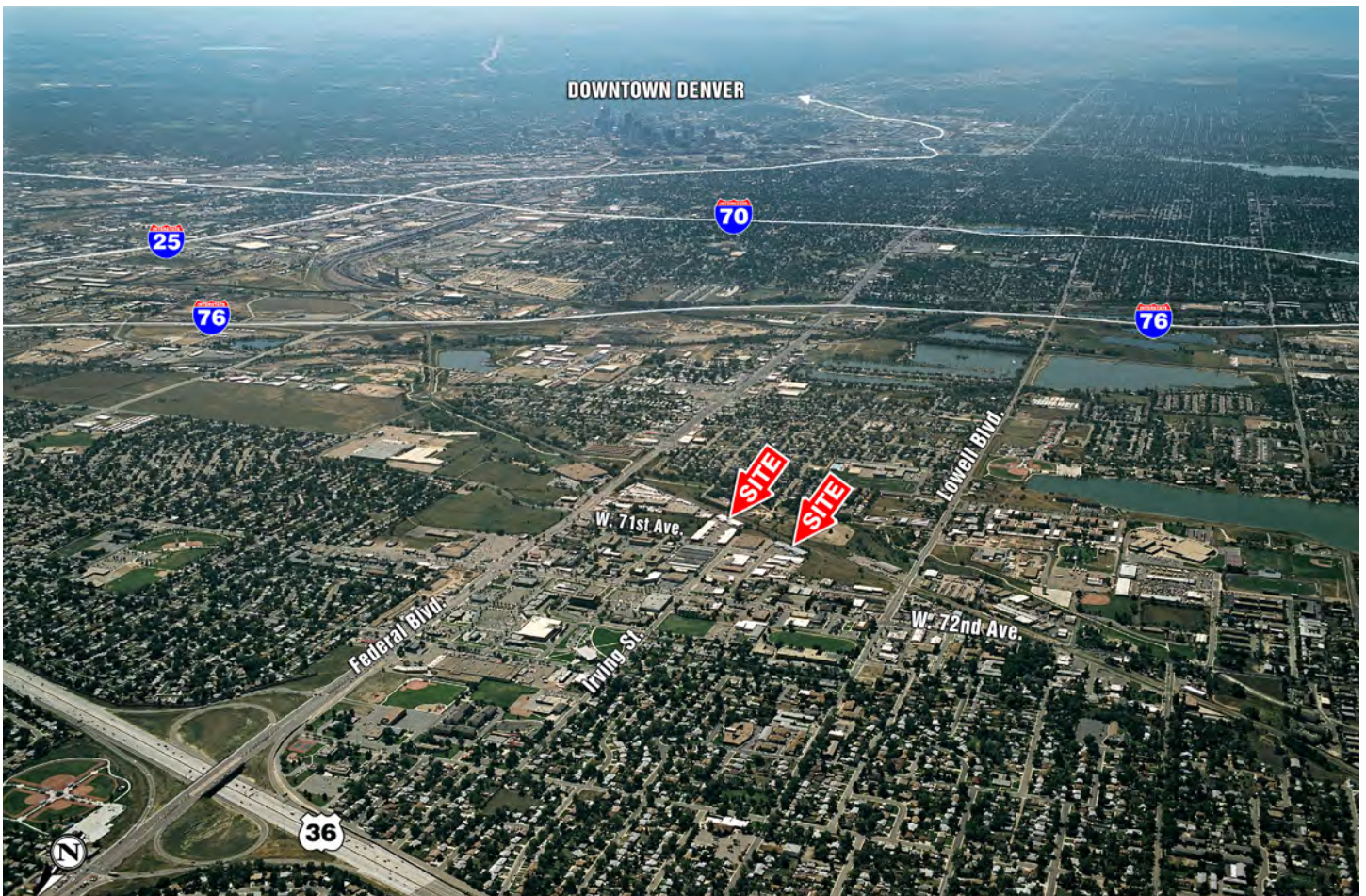


## PROPERTY DETAILS: KEW INDUSTRIAL PARK

Address: 3200 - 3240 W. 71st. Ave  
7015 - 7101 Julian St.  
City: Westminster  
County: Adams  
Gross SF: 82,659 SF  
# of Buildings: 4  
Year of Construction: 1974, 1977  
Construction: Insulated metal & brick  
Owner: KEW Realty Corporation  
Location: Central, Federal Blvd., exit off US-36, I-76, I-25. Located within an Adams County Enterprise Zone. Near future (2016) RTD FasTracks commuter rail stop.



## LOCATION



All information contained in this brochure, while not guaranteed, is obtained from sources deemed reliable. No representation is made as to the accuracy thereof and is submitted subject to errors, omissions, change of price, withdrawal or other conditions, without notice. It is the responsibility of either you or your agent to verify its accuracy.

### Leasing Contact

Mike Ledger | [mledger@kewrealty.com](mailto:mledger@kewrealty.com)

Jeremy Spira | [jspira@kewrealty.com](mailto:jspira@kewrealty.com)

(303) 329-8100 | 300 S. Jackson St. Ste. 550, Denver, CO 80209



REALTY CORPORATION